



F6.7

PRELIMINARY INFORMATION

# ADDING A 60'+ TO THE RANGE

## PRELIMINARY TECHNICAL SPECIFICATIONS

	PRESTIGE 630	PRESTIGE F6.7	PRESTIGE 690
Length Overall	19,03m 62'5"	20,45m 67'1"	21,45m 70'4"
Hull length	16,83m 55'2"	18,12m 59'5"	19,10m 62'8"
Beam	5,15m 16'10"	5,17m 16'11"	5,3m 17'5"
Max weight	33 800 kg 74 494 Lbs	42 802kg 94 362 Lbs	44 359kg 97 795 Lbs
Fuel tank	2 700L 713 US gal	3400L 900 US gal	3450L 911 US gal
Water tank	710L 188 US gal	710L 188 US gal	760L 201 US gal
Engine	2x725HP	2x900HP 2x1000HP	2x900HP 2x1000HP
Engine	2 x VOLVO D11 IPS950	2 x VOLVO D13 IPS1200 - IPS 1350	2 x VOLVO D13 IPS1200 – IPS1350
Propulsion	IPS	IPS	IPS
Berths	6+2	6 (8)+2	8+2
Bathrooms	3+1	3+1	3+1



X 6 (OPT X 8)



X 2



X 3



87m<sup>2</sup>



# 170m<sup>2</sup> of living space

BRAND NEW NAVAL PLATFORM  
VOLVO D13 – IPS POWERED

BOW MASTER CABIN POSITION



GRP Hard top as Opt

Brand marker: Fashion Plate

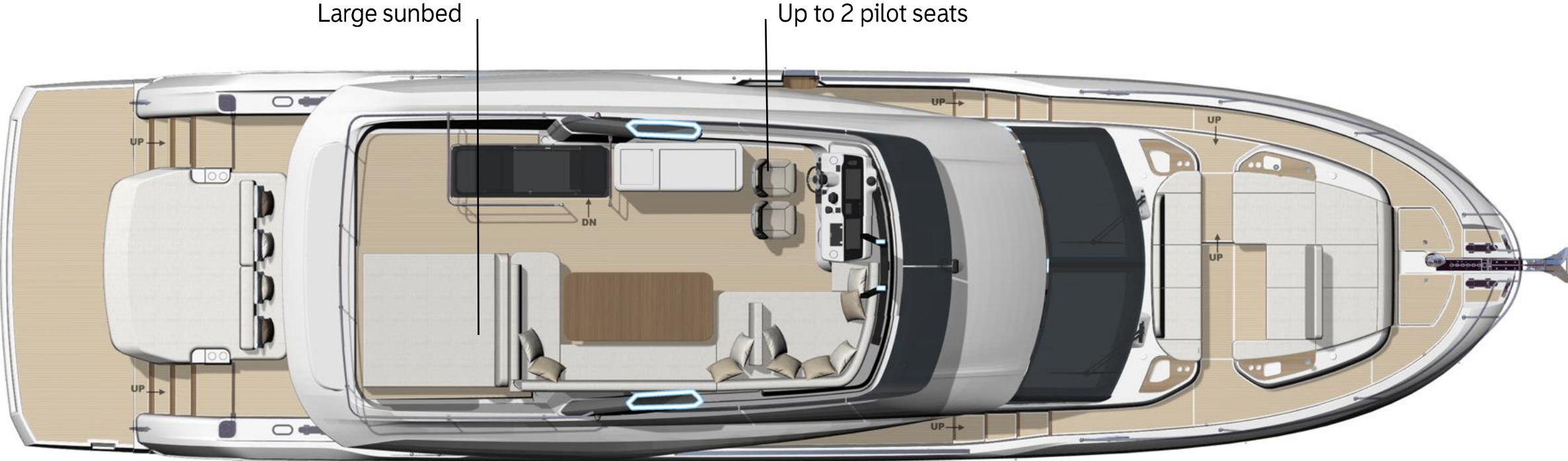
New glass windows design – One Way vision as Opt



# FLYBRIDGE OPTION 1: REAR SUNBED



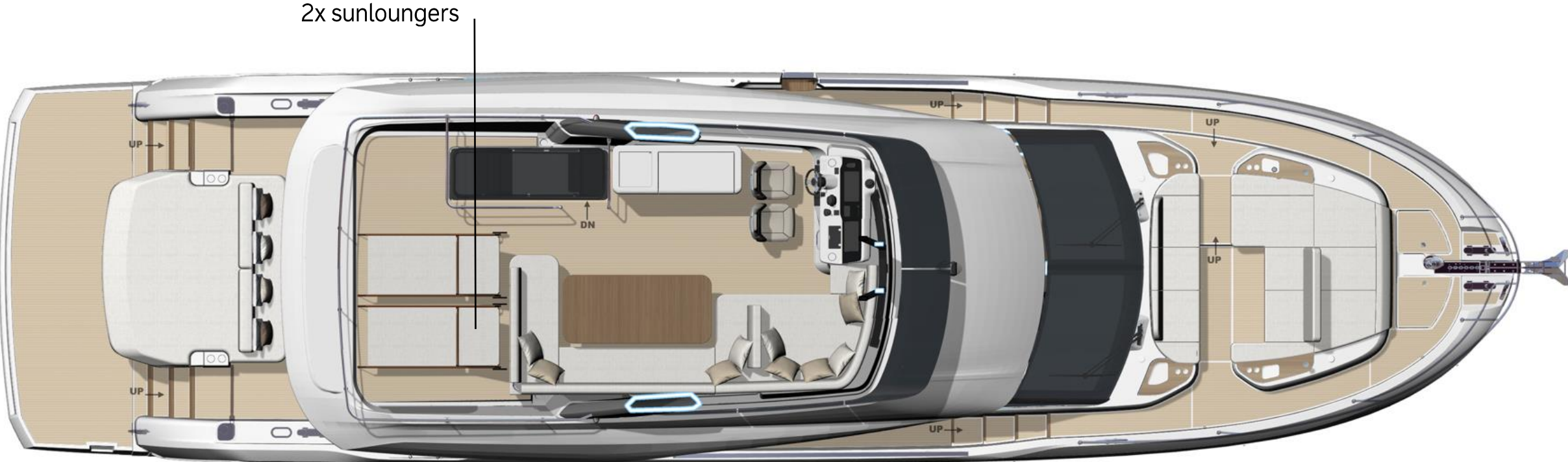
✦ USP – Layouts modularity



# FLYBRIDGE OPTION 2: SUNLOUNGERS X 2



✦ USP – Layouts modularity



# FLYBRIDGE OPTION 3: LOUNGE AREA



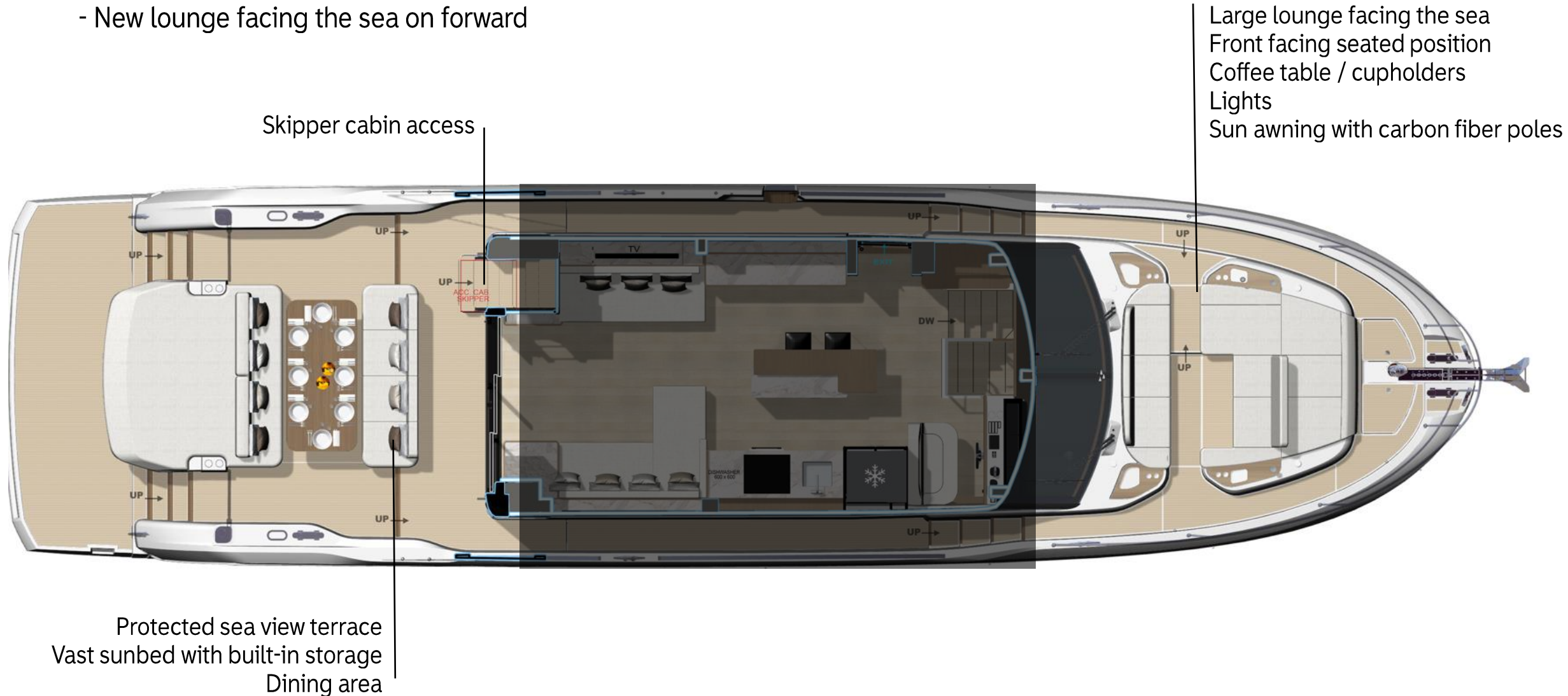
✦ USP – Layouts modularity



26m<sup>2</sup>  
FLYBRIDGE TERRACE

# MAIN DECK: STRONG INNOVATIONS

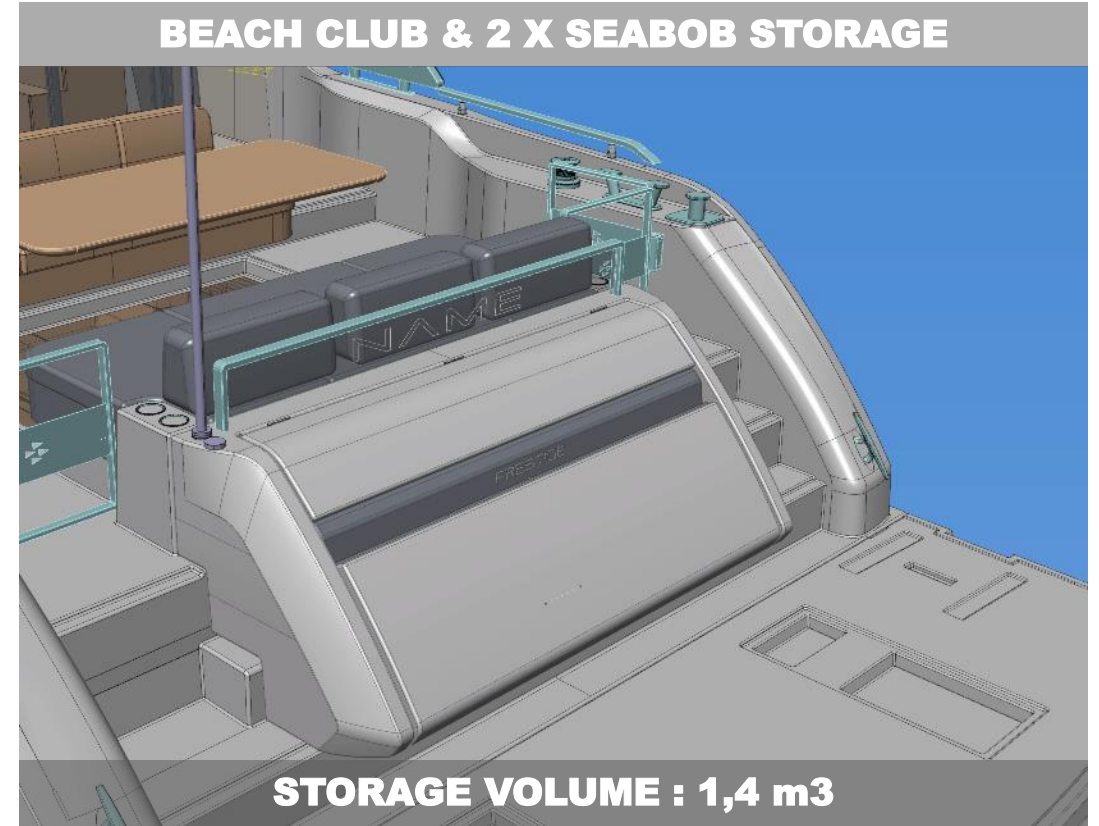
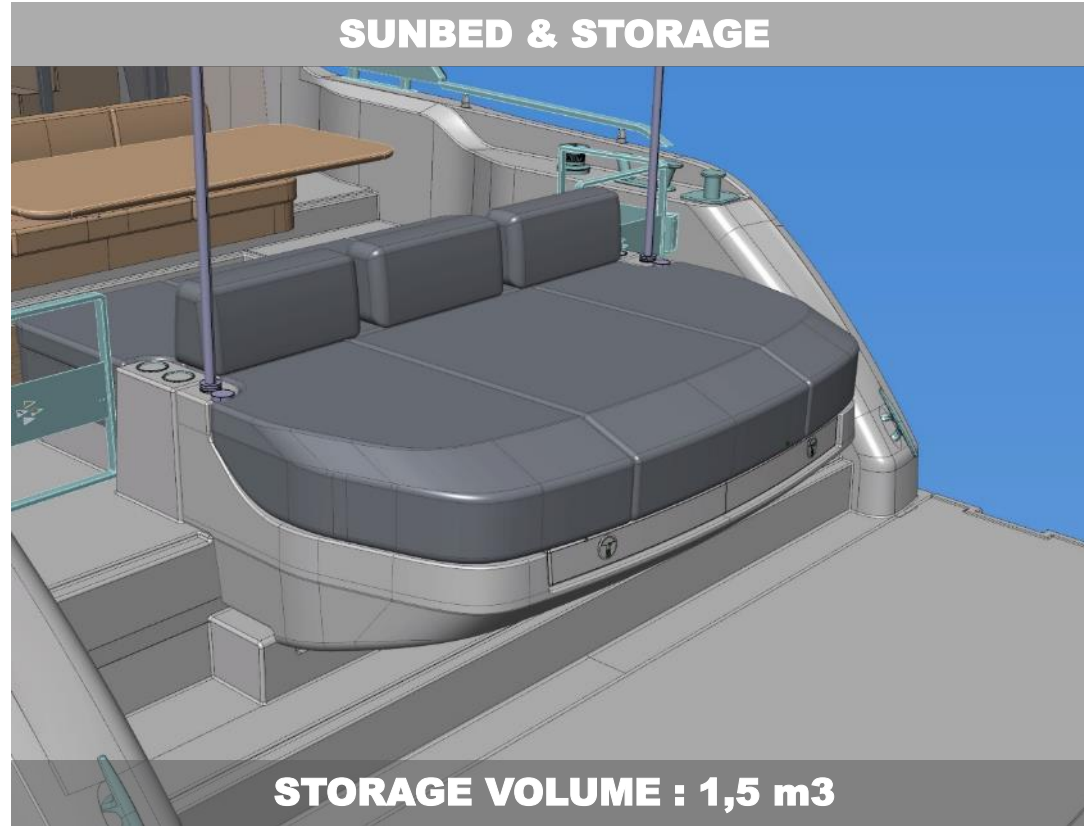
- ✦ **USP** - Cockpit in 2 levels to increase proximity to the water
  - Aft cockpit: 2 layouts
  - New lounge facing the sea on forward



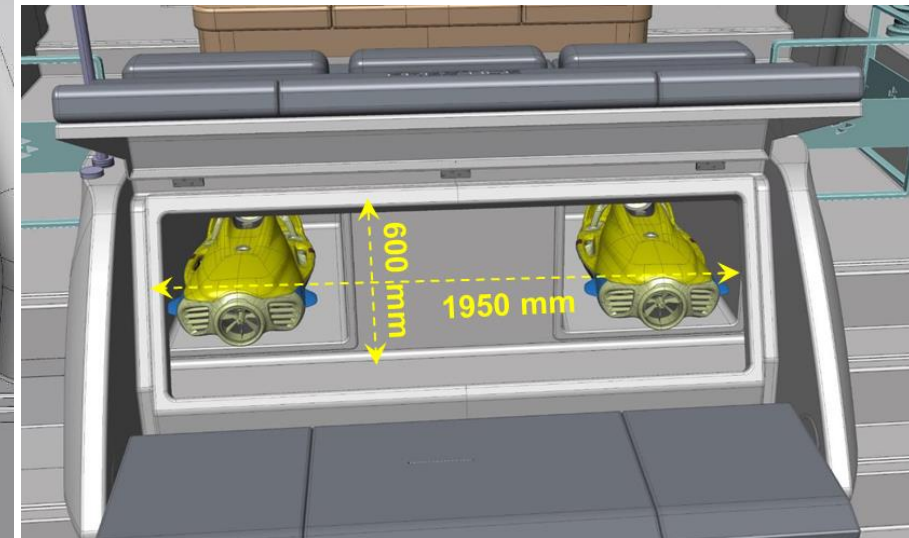
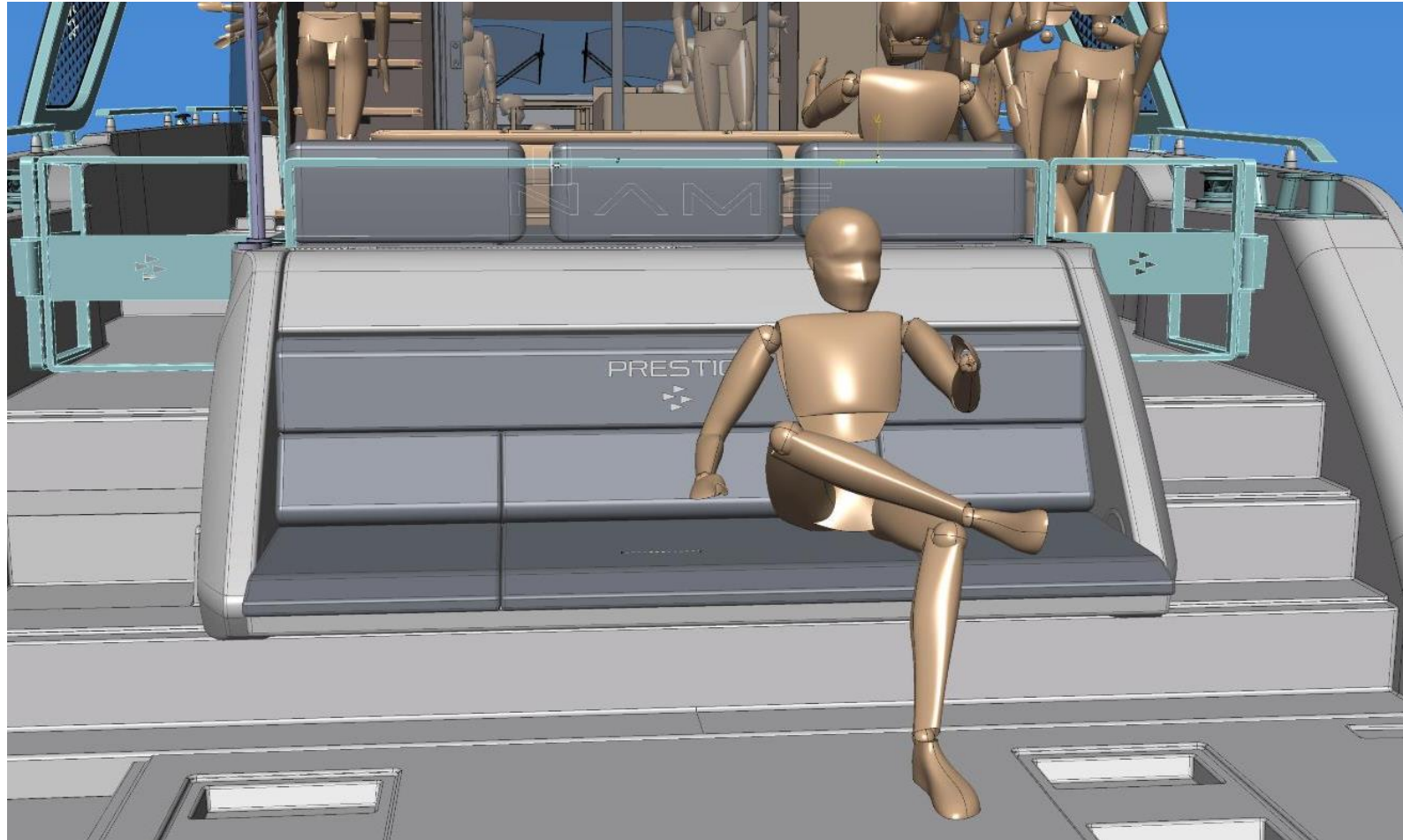




# BEACH CLUB: ALTERNATIVE LAYOUT

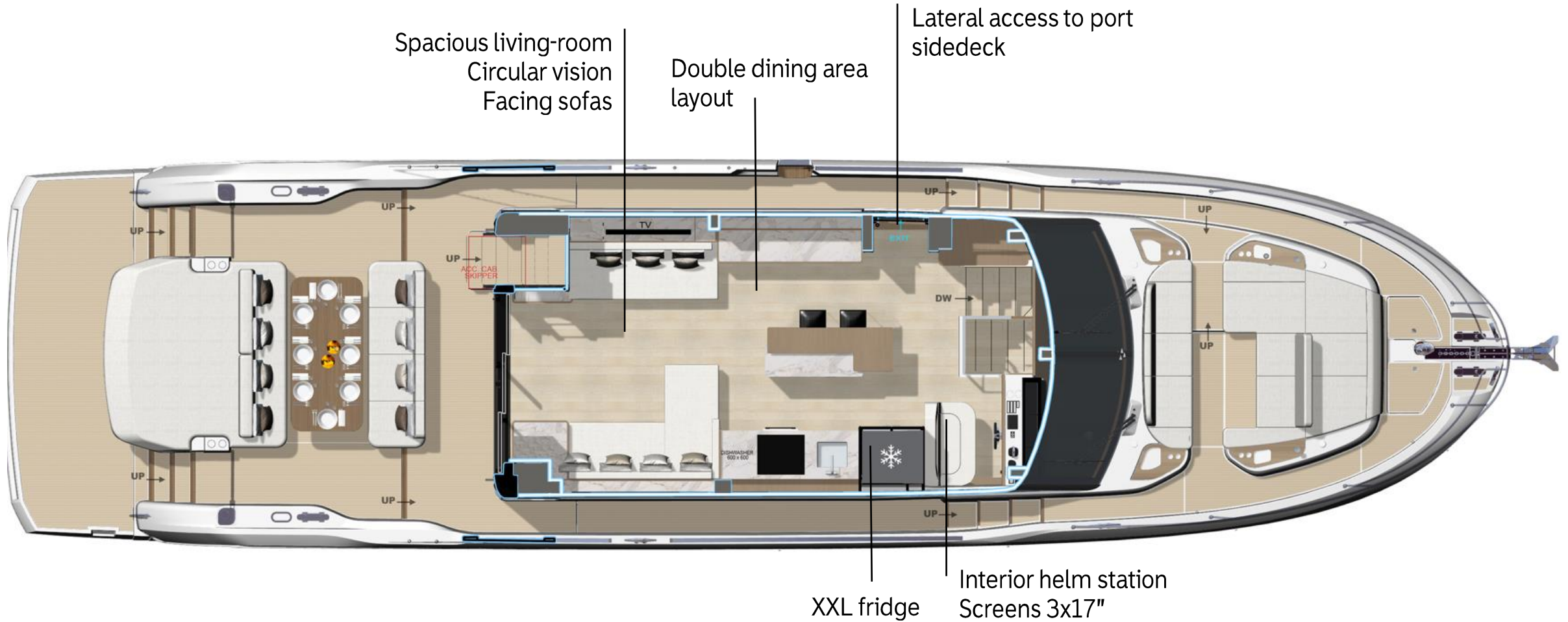


# BEACH CLUB: ALTERNATIVE LAYOUT



# MAIN DECK: STRONG INNOVATIONS

✦ USP - Dining Area: Double version to answer local needs



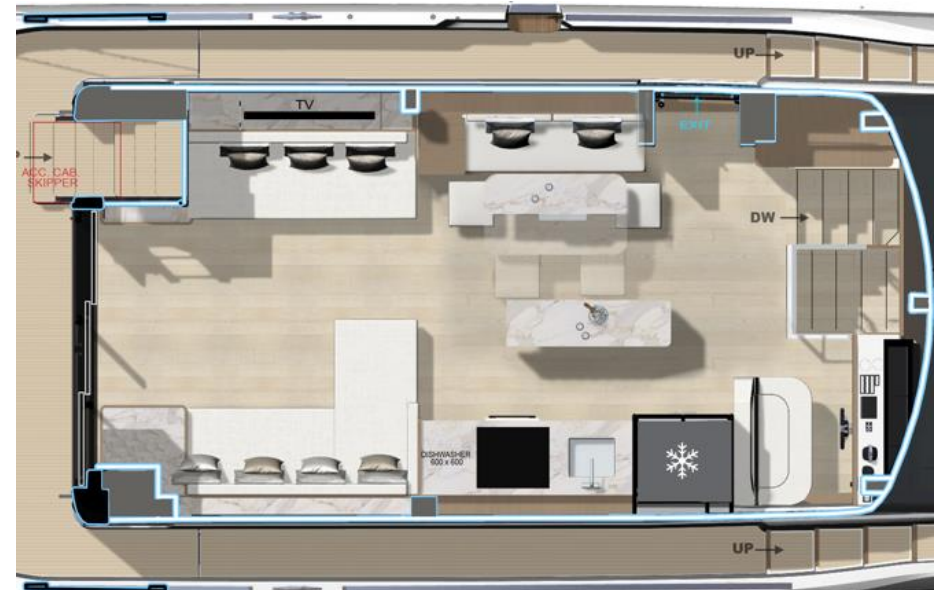
# MAIN DECK: STRONG INNOVATIONS

➤ **USP** - Dining Area: Double version to answer local needs

## HOME-STYLE KITCHEN & CENTRAL ISLAND



## CLASSIC DINING CORNER & CENTRAL ISLAND



# CENTRAL ISLAND GALLEY VERSION hull #1



PRELIMINARY INFORMATION - CONFIDENTIAL

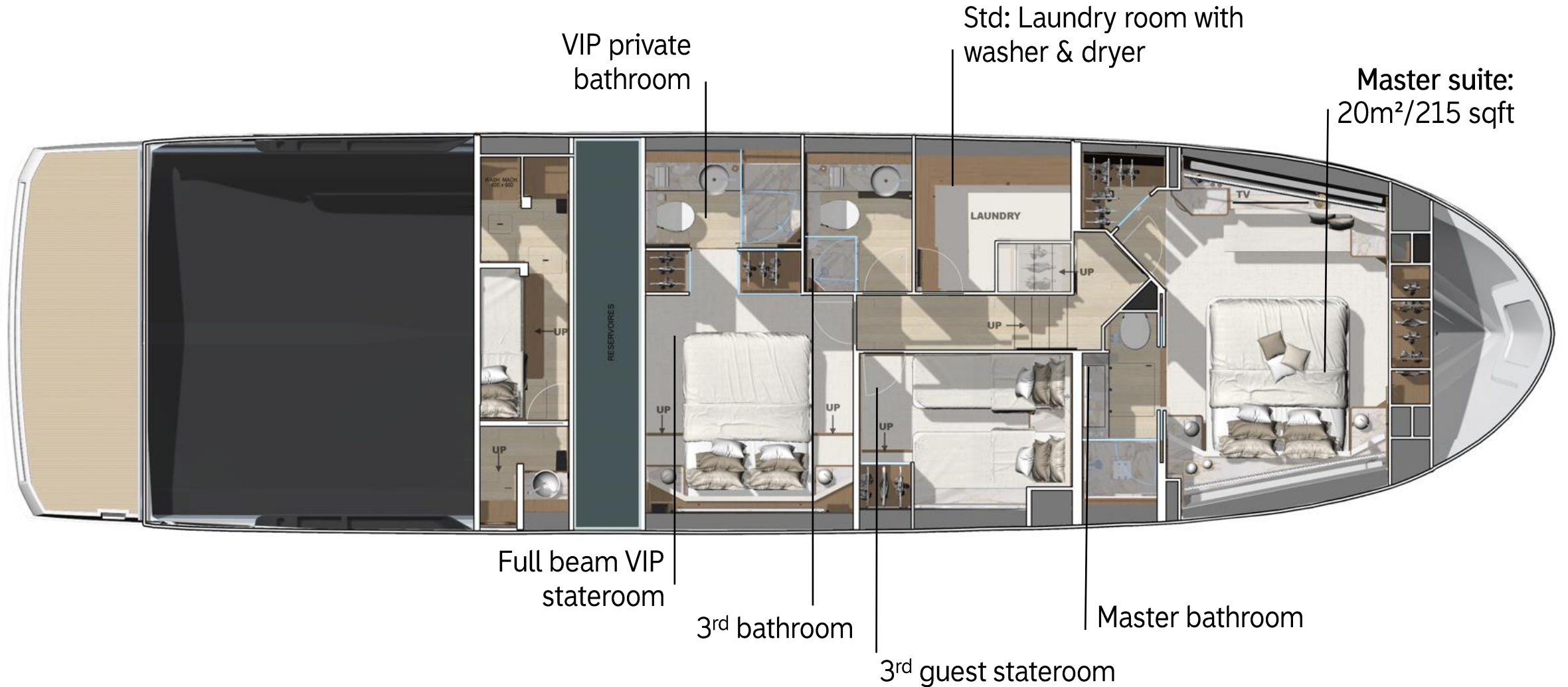
# CENTRAL ISLAND GALLEY VERSION



PRELIMINARY INFORMATION - CONFIDENTIAL

# LOWER DECK: 56m<sup>2</sup>/603sqft FOCUSED ON INTIMACY PRESTIGE<sup>®</sup>

➤ **USP** – 3 or 4 staterooms layout: strong value proposition



# LOWER DECK: 56m<sup>2</sup>/603sqft FOCUSED ON INTIMACY PRESTIGE

➤ USP – 4 or 3 staterooms layout: strong value proposition

Crew quarter  
Direct access to engines room  
2 bunk beds  
Washing machine & dryer

Opt 1 : 4th stateroom  
Opt 2: Desk









# Sand Oak interior woodwork version



# New Walnut interior woodwork version

